

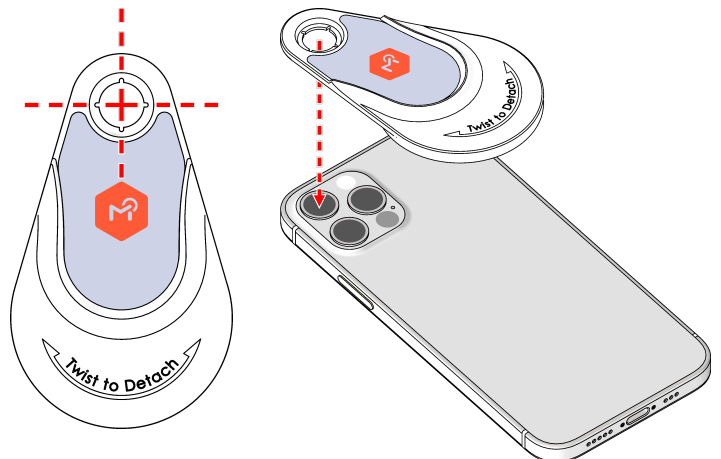


MoleScope II Universal

Smartphone & Tablet Camera Alignment (2024-03-18 V3.0)

For smartphones with multiple camera lenses, align the attachment with the center of the main camera.

Check the tables below for camera placements applicable to popular smartphone and tablet models.



iOS Devices		
iPhone / iPad Model	# of Cameras	Main Camera
iPhone 7 Plus	2 Horizontal	Left
iPhone 8 Plus	2 Horizontal	Left
iPhone X	2 Vertical	Top
iPhone XS	2 Vertical	Top
iPhone XS Max	2 Vertical	Top
iPhone 11	2 Vertical	Top
iPhone 11 Pro	3	Top Left
iPhone 11 Pro Max	3	Top Left
iPhone 12	2 Vertical	Bottom
iPhone 12 Mini	2 Vertical	Bottom
iPhone 12 Pro *	3	Top Left
iPhone 12 Pro Max *	3	Bottom Left
iPhone 13	2	Bottom Right
iPhone 13 Mini	2	Bottom Right
iPhone 13 Pro *	3	Bottom Left
iPhone 13 Pro Max *	3	Bottom Left
iPhone 14	2	Bottom Right
iPhone 14 Plus	2	Bottom Right
iPhone 14 Pro *	3	Bottom Left
iPhone 14 Pro Max *	3	Bottom Left
iPhone 15	2	Bottom Right
iPhone 15 Plus	2	Bottom Right
iPhone 15 Pro *	3	Bottom Left
iPhone 15 Pro Max *	3	Bottom Left
iPad Pro 12.9 (6th Gen)	2 Vertical	Top
iPad Pro 11 (4th Gen)	2 Vertical	Top

* Only MoleScope II devices with serial numbers starting with 223 and greater are compatible with these models.

Android Devices		
Phone / Tablet Model	# of Cameras	Main Camera
Samsung Galaxy S9 Plus	2 Vertical	Top
Samsung Galaxy S10	3 Horizontal	Center
Samsung Galaxy S10e	2 Horizontal	Right
Samsung Galaxy S10 Lite	3 Vertical	Center
Samsung Galaxy S10 Plus	3 Horizontal	Center
Samsung Galaxy S20	3 Vertical	Center
Samsung Galaxy S20 Plus	4	Center Left
Samsung Galaxy S20 Ultra	4	Center Left
Samsung Galaxy S21	3 Vertical	Center
Samsung Galaxy S21 Plus	3 Vertical	Center
Samsung Galaxy S21 Ultra	4	Center Left
Samsung Galaxy S22	3 Vertical	Center
Samsung Galaxy S22 Plus	3 Vertical	Center
Samsung Galaxy S22 Ultra	5	Center Left
Samsung Galaxy S23	3 Vertical	Center
Samsung Galaxy S231 Plus	3 Vertical	Center
Samsung Galaxy S231 Ultra	5	Center Left
Samsung Galaxy S24	3 Vertical	Center
Samsung Galaxy S24 Plus	3 Vertical	Center
Samsung Galaxy S24 Ultra	5	Center Left

Other Multi Camera Devices

Turn the camera on and set the zoom at 1x then block the cameras one by one on the back of the device. The main camera is the one that is blocking the view.



Consult instructions for use
www.molescope.com/molescope2

Have any questions?
Contact us at info@metaoptima.com today!